

Garden Meadows



Discover Ease, Luxury, and Serenity at Garden Meadows

Experience the ultimate in comfort and sophistication at Garden Meadows, a premier community designed for those who seek effortless living in a prime, convenient location. Nestled just minutes from shopping, entertainment, and I-84, our thoughtfully designed single-family homes offer the perfect balance of style and convenience with low-maintenance living.

Each home is crafted with exquisite attention to detail, featuring luxurious finishes that provide all the indulgences you desire. Choose from spacious first or second-floor primary suites, sleek granite countertops, custom trim, and stunning architectural design. Enjoy the warmth and ambiance of a gas fireplace, open floor plans, and the opportunity to add your personal touch.

The beauty of Garden Meadows extends beyond your front door, with private homes boasting breathtaking sunset and meadow views, offering a peaceful retreat at the end of each day.

Many homes include additional desirable features such as walk-in pantries, expansive primary closets, dedicated laundry rooms, multi-zone heating and cooling, patios, and oversized two-car attached garages.

Let Garden Meadows be the place where your dreams come true. Embrace the relaxed, luxurious lifestyle you deserve—schedule your tour today!

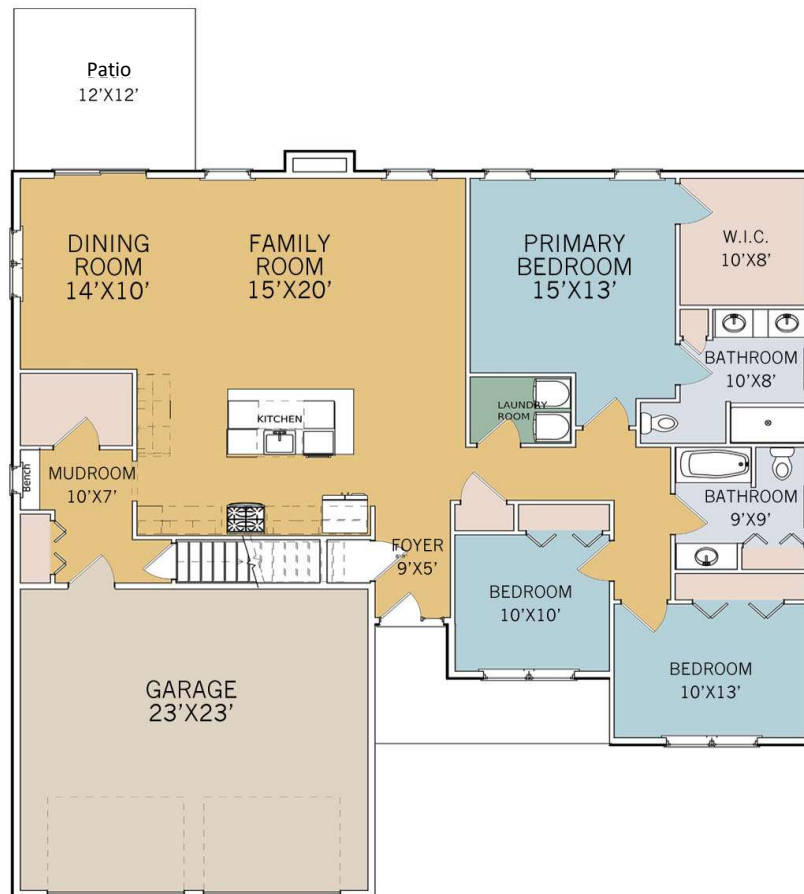
BOYNTONCT.COM 860.798.2103

Garden Meadows

The Woodbridge

Ranch Style Home Featuring 3 Bedrooms, & 2 Full Bathrooms

Approximately 2,000 SF



Room dimensions are only approximate and subject to change without notification.



BOYNTONCT.COM 860.798.2103

Square footages are approximate. The renderings and floor plans represent the depicted model; actual room dimensions may vary due to field conditions. The builder reserves the right to adjust dimensions and substitute specified materials with equivalent-quality brands, provided the financial and structural integrity of the building remains uncompromised. The specification sheet takes precedence over all artistic renderings. Specifications are subject to change, and the builder may modify plans without notice or obligation.

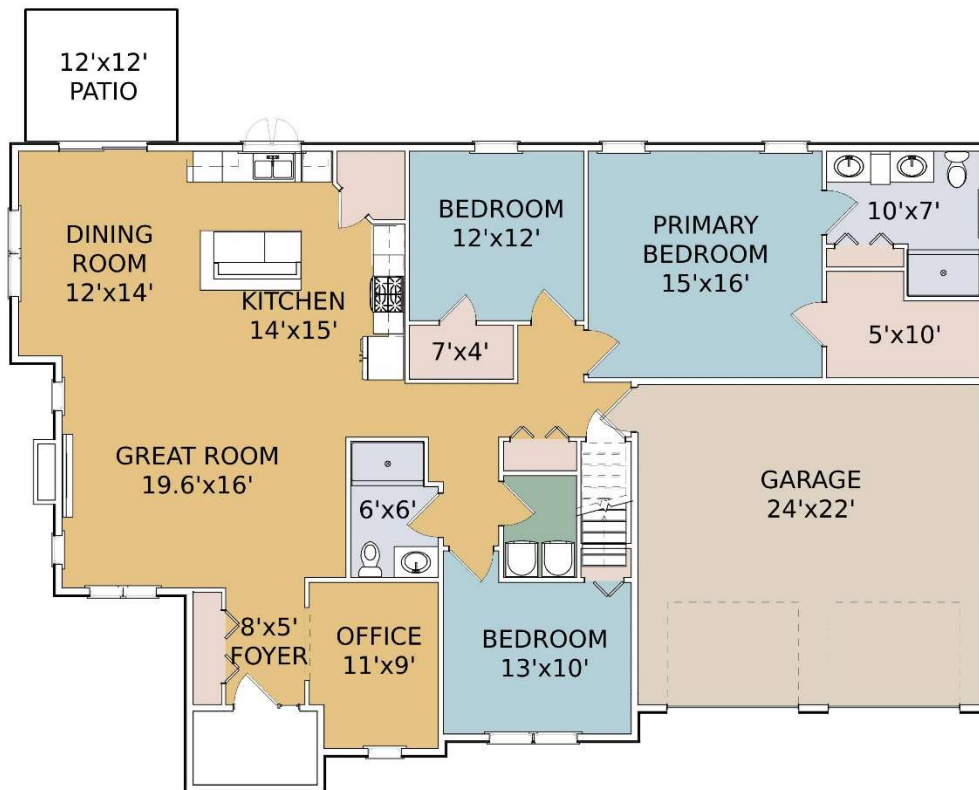
All building plans may be reversed or mirrored from what is shown in artistic renderings or site plan maps. **Plans are copyrighted by Boynton Construction, Inc. and may not be copied or duplicated without legal consequences.**

Garden Meadows

The Madison

Ranch Style Home Featuring 3 Bedrooms, & 2 Full Bathrooms

Approximately 2,000 SF



Room dimensions are only approximate and subject to change without notification.



BOYNTONCT.COM 860.798.2103

Square footages are approximate. The renderings and floor plans represent the depicted model; actual room dimensions may vary due to field conditions. The builder reserves the right to adjust dimensions and substitute specified materials with equivalent-quality brands, provided the financial and structural integrity of the building remains uncompromised. The specification sheet takes precedence over all artistic renderings. Specifications are subject to change, and the builder may modify plans without notice or obligation.

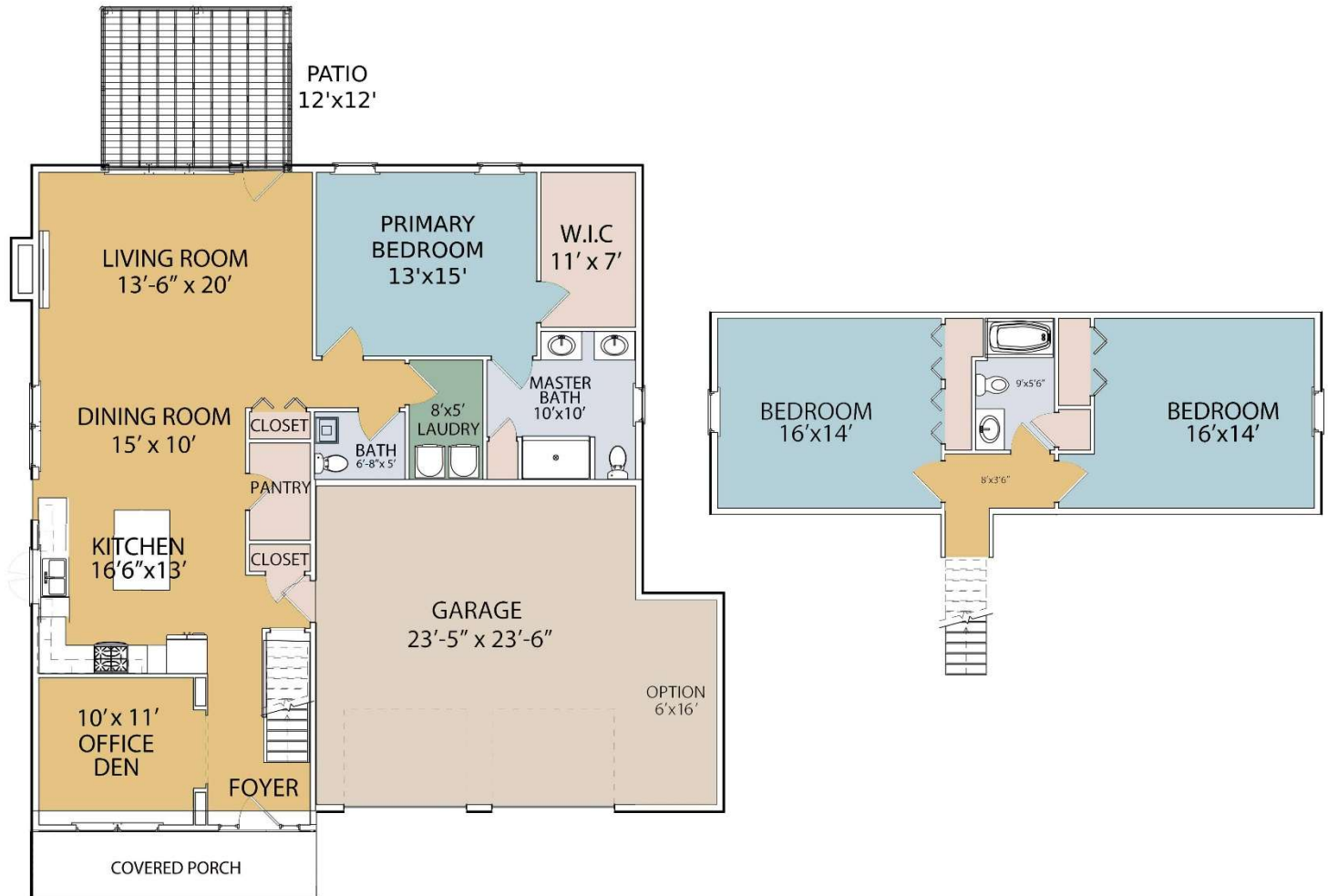
All building plans may be reversed or mirrored from what is shown in artistic renderings or site plan maps. **Plans are copyrighted by Boynton Construction, Inc. and may not be copied or duplicated without legal consequences.**

Garden Meadows

The Sterling

Ranch/Cape Style Home Featuring 3 Bedrooms, & 2 ½ Full Bathrooms

Approximately 2,280 SF



Room dimensions are only approximate and subject to change without notification.



BOYNTONCT.COM 860.798.2103

Square footages are approximate. The renderings and floor plans represent the depicted model; actual room dimensions may vary due to field conditions. The builder reserves the right to adjust dimensions and substitute specified materials with equivalent-quality brands, provided the financial and structural integrity of the building remains uncompromised. The specification sheet takes precedence over all artistic renderings. Specifications are subject to change, and the builder may modify plans without notice or obligation.

All building plans may be reversed or mirrored from what is shown in artistic renderings or site plan maps. **Plans are copyrighted by Boynton Construction, Inc. and may not be copied or duplicated without legal consequences.**

Garden Meadows

The Newport

Ranch/Cape Style Home Featuring 3 Bedrooms, & 2 ½ Full Bathrooms

Approximately 2,470 SF



Room dimensions are only approximate and subject to change without notification.



BOYNTONCT.COM 860.798.2103

Square footages are approximate. The renderings and floor plans represent the depicted model; actual room dimensions may vary due to field conditions. The builder reserves the right to adjust dimensions and substitute specified materials with equivalent-quality brands, provided the financial and structural integrity of the building remains uncompromised. The specification sheet takes precedence over all artistic renderings. Specifications are subject to change, and the builder may modify plans without notice or obligation.

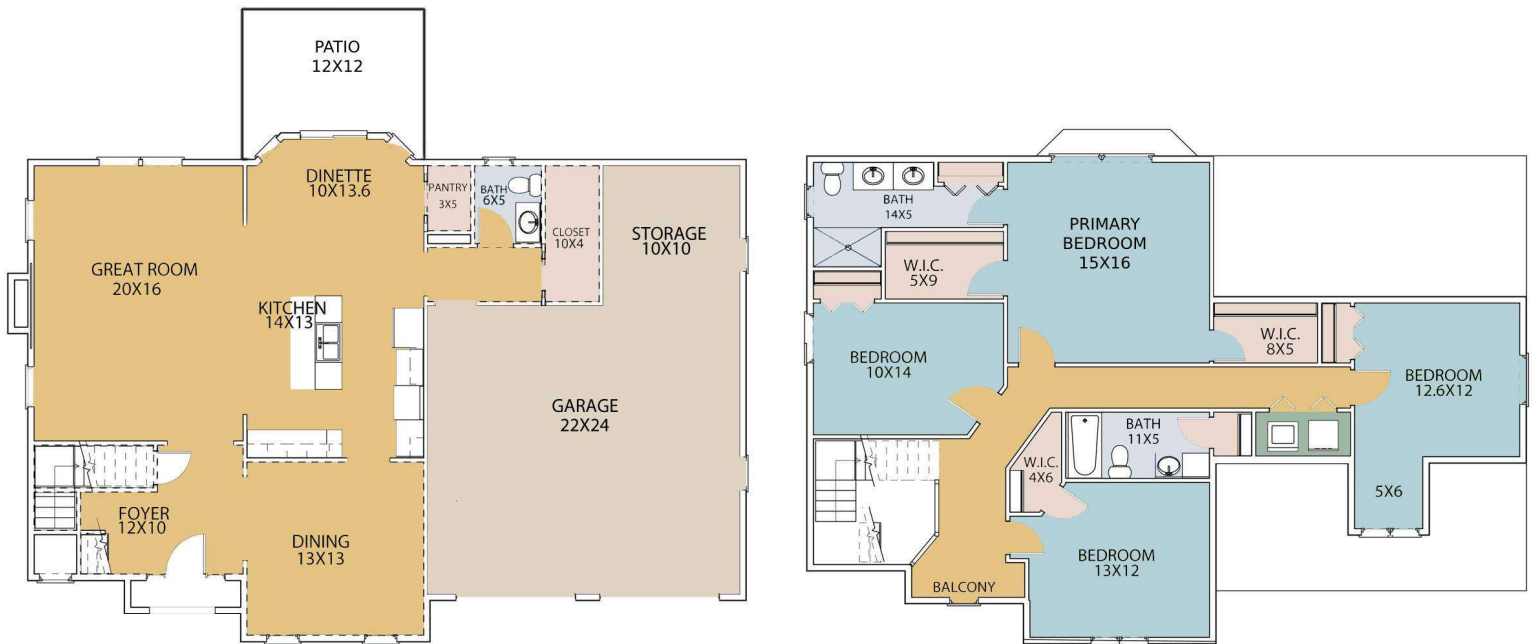
All building plans may be reversed or mirrored from what is shown in artistic renderings or site plan maps. **Plans are copyrighted by Boynton Construction, Inc. and may not be copied or duplicated without legal consequences.**

Garden Meadows

The Arlington

Colonial Style Home Featuring 4 Bedrooms, & 2 ½ Full Bathrooms

Approximately 2,680 SF



Room dimensions are only approximate and subject to change without notification.



BOYNTONCT.COM 860.798.2103

Square footages are approximate. The renderings and floor plans represent the depicted model; actual room dimensions may vary due to field conditions. The builder reserves the right to adjust dimensions and substitute specified materials with equivalent-quality brands, provided the financial and structural integrity of the building remains uncompromised. The specification sheet takes precedence over all artistic renderings. Specifications are subject to change, and the builder may modify plans without notice or obligation.

All building plans may be reversed or mirrored from what is shown in artistic renderings or site plan maps. **Plans are copyrighted by Boynton Construction, Inc. and may not be copied or duplicated without legal consequences.**

Garden Meadows

Home Pricing:

The Woodbridge (Approx. 2,000 sf.) \$644,900.

The Madison (Approx. 2,000 sf.): \$644,900.

The Sterling (Approx. 2,280 sf.): \$644,900.

The Newport (Approximately 2,490 sf.) \$661,900.

The Arlington (Approx. 2,680 sf.) \$669,900.

We look forward to welcoming you as our newest neighbors and friends!

(PRICING AND AVAILABILITY ARE SUBJECT TO CHANGE WITHOUT NOTICE.)



BOYNTONCT.COM 860.798.2103